

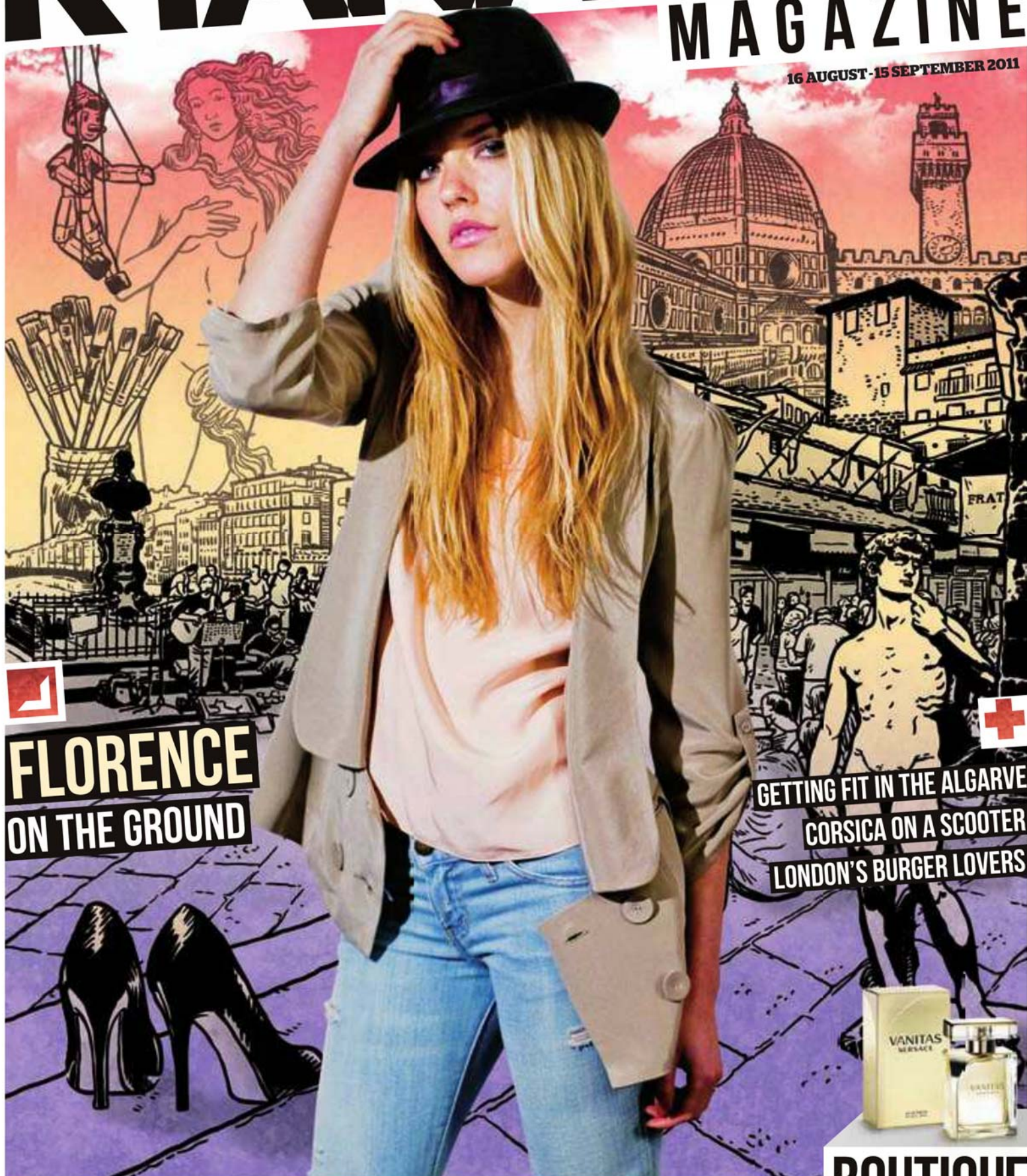
YOUR FREE COPY

RYANAIR



MAGAZINE

16 AUGUST - 15 SEPTEMBER 2011



**FLORENCE
ON THE GROUND**

**GETTING FIT IN THE ALGARVE
CORSICA ON A SCOOTER
LONDON'S BURGER LOVERS**



★ BRAND NEW SUMMER OFFERS! NEW FRAGRANCES, SKINCARE, GIFTS, GADGETS, DRINKS & SNACKS | TURN TO PAGES 133 - 162

BOUTIQUE

ELVIS LIVES

THE KING HAS A NEW CASTLE, AND IT'S IN DENMARK

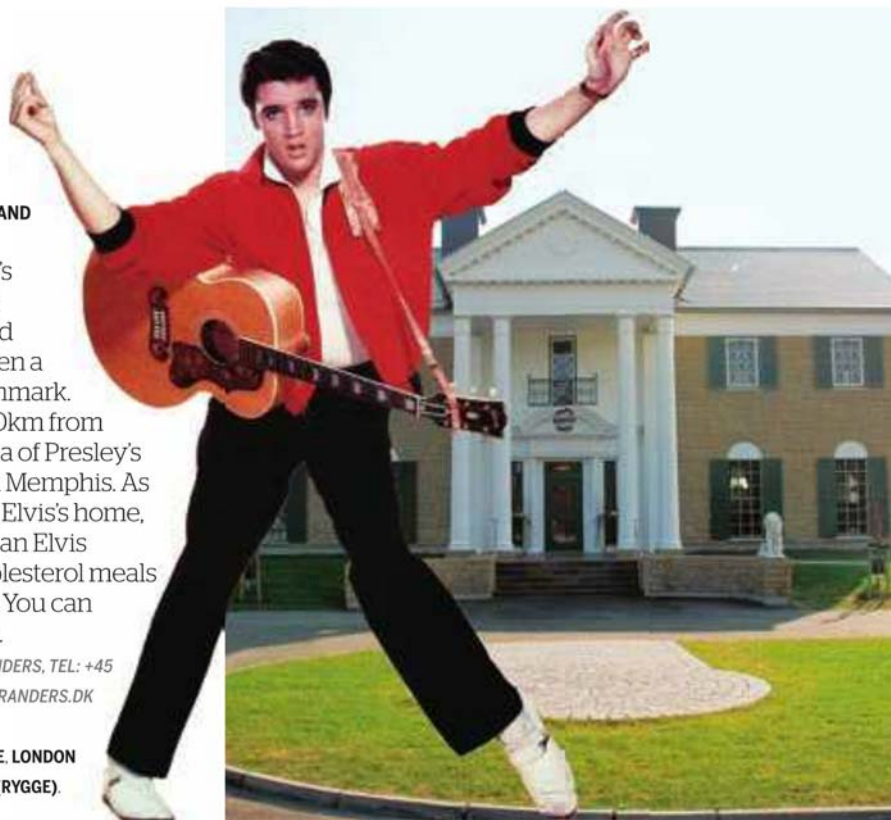
Elvis fans say the King's not dead, and who are we to argue? His legend has certainly been given a new lease of life in Denmark. Graceland Randers, 40km from Aarhus, is a new replica of Presley's Graceland mansion in Memphis. As well as peeking inside Elvis's home, you can roam around an Elvis museum, eat high-cholesterol meals in the diner and more. You can even get married here.

3 GRACELAND RANDERS VEJ, RANDERS, TEL: +45 (0)86 429696, WWW.GRACELANDRANDERS.DK

TEXT BY SOPHY GRIMSHAW

FLY TO AARHUS FROM ALICANTE, LONDON (STANSTED), MALAGA AND OSLO (RYGGE).

WWW.RYANAIR.COM



ON-THE-SPOT QUIZ

Drop what you're doing and answer this...

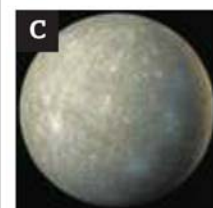
Which of the following could you theoretically fit inside London's O2 Arena?



A
18,000 DOUBLE-DECKER BUSES



B
THE EIFFEL TOWER, ON ITS SIDE



C
THE PLANET MERCURY



BON APPETIT!

SURSTRÖMMING, SWEDEN

When August rolls round, so does *Surströmming*. Popular in northern Sweden, this fermented Baltic herring is sold in pressurised tin cans, and smells like vinegary flatulence (yes, that nice!). It's served on buttered crispy bread and garnished with onions, dill and chopped potatoes, and I found it tastes better than it smells – though it took me a while to work up the courage to try it.

TEXT BY LOLA AKINMADE ÅKERSTRÖM

FLY TO STOCKHOLM (SKAVSTA AND VASTERAS) FROM 45 DESTINATIONS, INCLUDING TALLINN. WWW.RYANAIR.COM

I KNOW A LITTLE PLACE

THIS MONTH: LIMOGES, FRANCE

WHERE AGAIN? Slap bang in the middle of the country and a part of France considered by many as the land that time forgot – but in a good, fabulously picturesque way.

GATEWAY TO: France's gloriously unspoilt Limousin region.

MUST DO: A bracing countryside walk. The region is vast and its geography ranges from gently undulating fields to an almost Alpine environment in the south-east.

TRY IT IF YOU LIKE: Porcelain – Limoges is the porcelain capital of France.

TEXT BY MIKE PEAKE

FLY TO LIMOGES FROM BRISTOL, EAST MIDLANDS, LEEDS BRADFORD, LIVERPOOL AND LONDON (STANSTED). WWW.RYANAIR.COM

